



# VILLAGE OF MAPLE BLUFF

neighborhood news

*October 2023*



**FIRE PREVENTION MONTH**



## Calendar of Events

### October

- 2 Parks and Recreation
- 3 Personnel & Finance
- 4 Ordinance Steering Committee
- 9 Plan Commission Public Hearing
- 10 Building Board
- 10 Village Board
- 15 Fire Prevention Open House
- 17 Citizen's Safety Sub-Committee
- 26 Municipal Court
- 29 Halloween Parade
- 29 Halloween Trick-or-Treat
- 31 November Building Board Materials Due

### November

- 14 Building Board
- 14 Village Board & Public Hearing
- 16 Municipal Court
- 23/24 Admin and Public Works Closed
- 28 December Building Board Materials Due

## Village Board

**President** Kevin O'Driscoll  
kodriscoll@villageofmaplebluff.com

**Trustee** Lindsay Campbell  
lcampbell@villageofmaplebluff.com

**Trustee** Kristine Jaeger  
kjaeger@villageofmaplebluff.com

**Trustee** Ellen Reyerson  
ereyerson@villageofmaplebluff.com

**Trustee** Ben Schmidt  
bschmidt@villageofmaplebluff.com

**Trustee** Jim Schuler  
jschuler@villageofmaplebluff.com

**Trustee** Mike Wittenwyler  
mwittenwyler@villageofmaplebluff.com

## Trash/Recycling

Trash pick up is shaded, recycling dates are circled

October						
S	M	T	W	T	F	S
1	2	3	4	5	6	7
8	9	10	11	12	13	14
15	16	17	18	19	20	21
22	23	24	25	26	27	28
29	30	31				

November						
S	M	T	W	T	F	S
			1	2	3	4
5	6	7	8	9	10	11
12	13	14	15	16	17	18
19	20	21	22	23	24	25
26	27	28	29	30		

December						
S	M	T	W	T	F	S
3	4	5	6	7	8	9
10	11	12	13	14	15	16
17	18	19	20	21	22	23
24	25	26	27	28	29	30
31						





# Glad to Have our Hands Full!

By Tanner A. Nystrom

While many lament the end of summer, I personally relish the shift into autumn and eagerly embrace the arrival of October! The vibrant hues of the falling leaves and the distinctive scent of the autumn breeze beckon us to enjoy outdoor activities before winter's chill takes hold. As you're aware, autumn necessitates a significant amount of work for our diligent Public Works team, but they are always ready to rise to the occasion. In the Administration department, we're gearing up for the budget season and are already in the throes of planning for the upcoming year. Our Fire Department's EMS transport services continue to showcase exceptional response times, and our Police Department remains as vigilant as ever. Autumn is a time of change - we are active and are glad to have our hands full!



Halloween is fast approaching and, as always, we want to do everything we can to make the day a great experience for kids. The structured hours for Trick-or-Treating in the Village are from Sunday, October 29, from 4:00-6:00 pm. Some may also choose to Trick-or-Treat on the 31st. Residents can opt in or out of trick-or-treat by turning their porch or front door light on or off on either day. We will have multiple officers on duty for the 29th and the 31st as we look forward to a safe year of fun.

October is National Crime Prevention month and agencies across the country work with partners to improve crime prevention and safety initiatives during this time. As such, I want to take the opportunity to share a strategic perspective of how the Maple Bluff Police Department (MBPD) approaches policing. Every police department must carefully choose what strategies to pursue based on the specific needs of their community. The MBPD prioritizes the deterrence and apprehension of violent criminals, repeat offenders, impaired drivers, and reckless drivers due to the common and critical threat they pose to Village residents. To promote criminal deterrence in our community we employ a Problem-Oriented Policing (POP) strategy. MBPD's specific approach to POP encourages and enables our officers to continuously communicate, engage

and build trusting relationships with the community, maintain a persistent patrol presence, proactively identify and address criminal violations, respond quickly to incidents, and thoroughly investigate all crimes committed in our jurisdiction. This strategy keeps our community safe despite the complex and unique challenges we face as law enforcement. Ultimately, our policies reinforce this strategy and enable our officers' operational effectiveness.

So far this year, our Police team has made approximately 80 arrests, just 16 arrests less than we made in all of 2022. The impact our officers have on making our community and surrounding neighborhoods safer is beyond question. This is no small feat for an agency of our size,

and it directly reflects the proactive approach to policing that deters crime. I am proud of our officers. In the same vein, I want to thank the residents who participated in the "Slow Down" campaign in September. In addition to the exceptional work our officers do, support and involvement of community members is essential to the success of our efforts and overall safety of the community. To that end, you may notice new "Neighborhood Watch" signage going up throughout the Village. We have worked in collaboration with the newly created Citizens Safety Sub-Committee to promote signage that both meets the community's expectations and reinforces our Police Department's efforts.



Finally, I want to be sure to reiterate how fortunate we are to have a community that supports us. We recognize how fortunate we are to work for a community that supports and values our efforts. Thank you!

*Sincerely,*

Tanner A. Nystrom



We weren't satisfied hearing other doctors and specialists say *'this is something you have to learn to live with'* or *'this is just part of getting older'* or even *'this is the best we can do for you'*.  
 - Jaime Irving, LAC & Andie Algar

Do you ever wonder what makes some doctors so compassionate while others offer bedside manner like an AI Chatbot? **For the team at Remedy Acupuncture, our work comes from a place of true empathy.** We found our own paths to acupuncture through its incredible healing abilities. We weren't satisfied hearing other doctors and specialists say *'this is something you have to learn to live with'* or *'this is just part of getting older'* or *'this is the best we can do for you'*.



Remedy Acupuncture is known for our unique approach to care, utilizing time-tested Eastern medicine with modern, scientifically proven Western approaches. A true blend of integrative medical care. We specialize in complex, chronic, and seemingly hopeless cases like:

- Chronic Pain
- Fibromyalgia
- Peripheral Neuropathy
- Postherpetic Neuralgia
- Reproductive Health
- Trigeminal Neuralgia

Start feeling better, schedule your consult today!  
[www.remedyacu.llc](http://www.remedyacu.llc) | [info@remedyacu.llc](mailto:info@remedyacu.llc) | 608-285-9000

additions • kitchen and bath remodeling • universal design



**TZ** of Madison, Inc.  
 GENERAL CONTRACTORS  
 (608) 241-2967

The Taff family has been building and remodeling homes in Maple Bluff since the 1920's. Call us for your next project!  
 View our award winning projects at [tzofmadison.com](http://tzofmadison.com)



## Newsletter from the Department of Public Works

The winds of change are swirling about as the Autumn Equinox has arrived to take us upon that journey from the green and serene to barren and stark. Fortunately, it's a process that takes time and provides some beautiful scenery as the foliage of the trees transition to all the warm colors, easing the bite of the dropping temperatures. It's my favorite time of year as the excessive heat is gone replaced with gentle warmth from the sun, a cooling breeze and an evening chill to sleep better... with the windows open. All this allows for an advantage to engage in physically demanding work outdoors, whether it's harvesting the crop or in our case collecting leaves and garden debris, there is a harmony to be found this time of year.

As this season continues and the leaves are gathered and the gardens are dismantled, **please segregate materials into like piles, do not mix mediums like plant roots, sticks, branches, stone and dirt or mulch and chips with the leaves.** To do so will slow or prevent us from making the collection until you separate the material properly. Place all materials on the terrace, **NOT** in the street. The debris that is taken to the lake when it rains is extremely harmful for the health and well-being of the big body of water, we call Lake Mendota. We all need to be good stewards.

We make weekly collections of all materials. As the leaf collection demands increase, we will be collecting the entire week. For us to have success we require your assistance, do not place materials around trees/poles/mailbox/shrubs/cars or equipment. Advise your service providers of these necessities. Your cooperation is greatly appreciated.

MG&E will be embarking on a project to bury some of the problematic transmission lines. Initially the lines along the 700 block to or near 815 Farwell Dr. will be undergrounded possibly late this year. There have been discussions on continuing similar undergrounding projects elsewhere to help solve power outages that the village has experienced in recent years. Portions of this year's work and future work are driven by the age and vulnerability of their transmission system and what the village has for needs, wants, and desires. This will be a series of projects that will likely take years to complete. I like that it is getting started. Please see an article in this newsletter from MG&E

This time of year, we prepare for leaf collection and the following season...winter. Equipment will get a series of maintenance procedures prior to the onset of these demanding time periods. A reminder for the start of the holiday season...Thanksgiving! It is a short week, and we will do our best for collections. Get your leaves out early and frequently. If you wait? Expect delays due to weather and or availability of equipment. Every now and again the next season shows up early...

Enjoy the here and now for tomorrow is not an absolute.



There are pumpkins on porches and a chill in the air, so here's your reminder to mark your calendars for Village Trick-or-Treat on Sunday, October 29, 2023 from 4:00-6:00 pm (after the Packer game)! We hope this weekend option will make a beloved tradition safer for kids and more relaxed for their parents.

As always, residents can opt in or out of trick-or-treat by turning their porch or front door light on or off on the 29th **or** actual Halloween.

***If you're feeling extra spooky this year, you can do both!***



# Fire Rescue Department By Kristopher Loy, Fire Chief



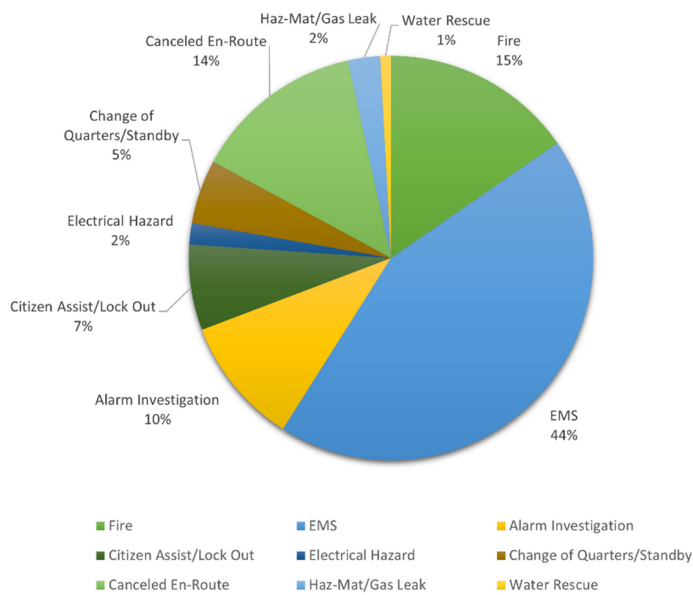
## Response Information:

The Maple Bluff Fire Rescue Department (MBFD) has responded to a total of 117 calls for service in 2023.

The MBFD's new ambulance has responded to 41 emergency medical calls which resulted in 23 patients

being transported to area hospitals since our ambulance was placed into service March 1st, 2023. Our Fire and EMS crews have an average response time within the Village of 3 minutes 52 seconds (from the time we're notified to our arrival on scene).

2023 Fire/EMS Calls





## Fire Department Open House

**SUNDAY, OCTOBER 15, 2023**  
**11:00AM-2:00PM**  
**MAPLE BLUFF FIREHOUSE**  
**18 OXFORD PLACE, MADISON, WI 53704**

Prizes  
Fire Trucks  
Ambulance

Fire Extinguisher and Equipment Demos





www.villageofmaplebluff.com/fire-rescue/

## Open House/Save The Date:

The Maple Bluff Fire Rescue Department is holding our annual fire prevention open house on Sunday, October 15, 2023 from 11:00am-2:00pm at our firehouse (18 Oxford Place, Madison, WI 53704). Our firefighters and EMTs will be providing fire safety presentations, equipment demonstrations, and show off our fire apparatus and ambulance. There will be treats, goodies, and fire safety literature for attendees.

## Congratulations:

Congratulations to Fire Chief Kristopher Loy for being voted as the 2023 People's Choice winner of Best Firefighter. Each year Madison.com honors people and businesses in the greater Dane County area that recognize the value of hard work, creativity, perseverance, and continually exceed expectations. A Madison.com People's Choice Award is not only a well-deserved "thank you" to those who truly care for their customers and community. It also reinforces the efforts of those who go above and beyond every day, making our community a better place to live, work, and play. Congratulations Chief!



## Fire Truck Parade and Display:

On October 8, 2023, help us kick-off National Fire Prevention Week with a fire truck parade on State Street in Madison, WI. After the parade, visit with firefighters and see apparatus from departments throughout Dane County, including Maple Bluff, on the Capital Square.



Parade on State Street: 1:00pm

Fire Truck Display on Capital Square: 1:30pm-3:00pm

Brought to you by: Dane County Fire Chiefs Association & Madison Fire Department.



## Fire Rescue Department (continued)

By Kristopher Loy, Fire Chief

### Fire Department Training:

On Monday, September 18, 2023, members of the Maple Bluff Fire Rescue Department practiced their motor vehicle extrication skills. Vehicle Extrication requires our firefighters to use a wide variety of tools and equipment to help remove injured patients who've become trapped or entangled in a vehicle following a crash. The MBFD would like to thank Precision Towing for donating and transporting the wrecked vehicles we used for practice.





# MGE Electric Upgrade

## Village of Maple Bluff



Madison Gas and Electric (MGE) is planning to upgrade the electric system in the Village of Maple Bluff.

In response to multiple tree- and storm-related outages, MGE is interested in constructing an underground electric distribution system to enhance service reliability and decrease tree-trimming needs. Due to its scale, the project will be addressed in multiple phases, as shown in the map, and is expected to begin in November 2023.

To reduce the impact to private properties, MGE will coordinate with the Village to use the road right-of-way as much as possible to access the lines and equipment being upgraded. We will be requesting easements from property owners where the project design requires it.

### Why is this work needed?

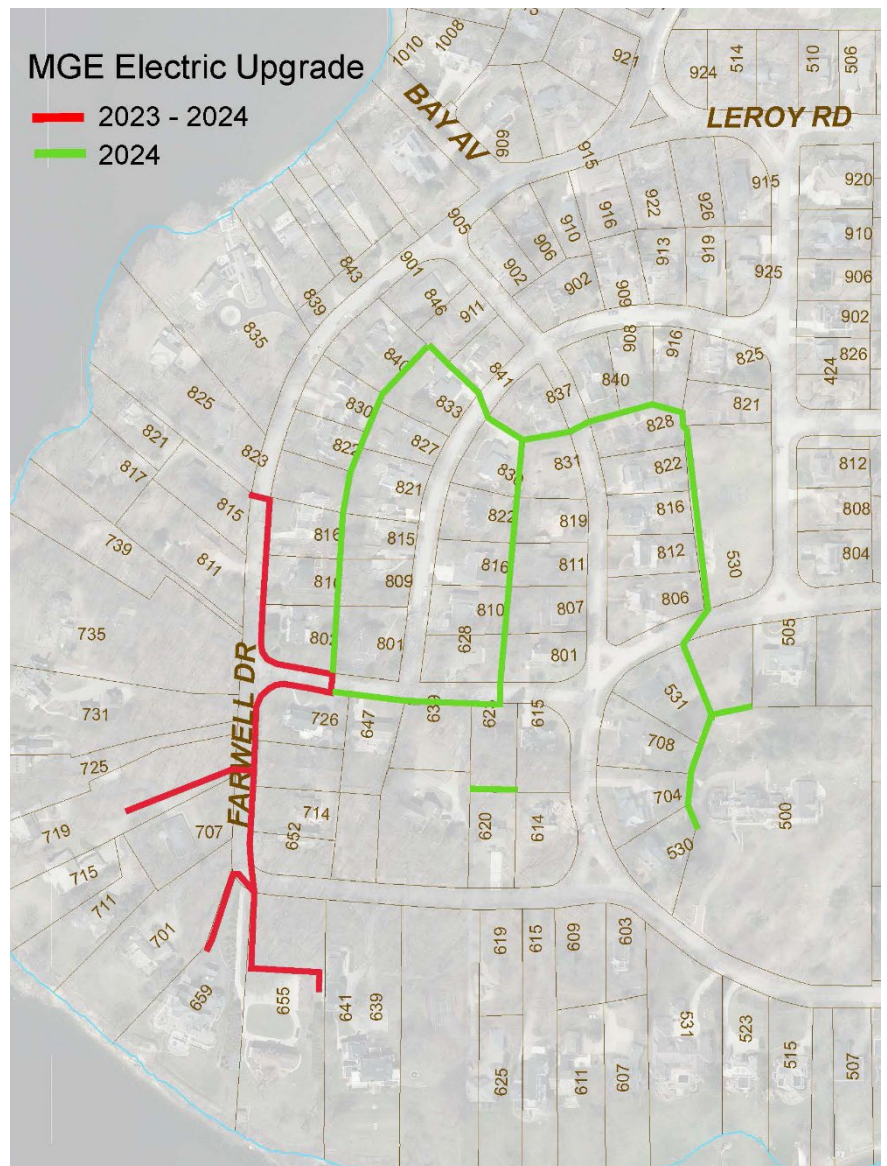
Storms and wind can cause trees to fall or branches to bend or break into overhead electrical wires. Even small limbs that grow into and touch a high-voltage electric line can cause a short circuit, electrical outage or fire. Installing new underground high-voltage electric lines in parts of the village will enhance reliability and reduce the need for tree trimming.

And, as part of this project, MGE also will be installing enhanced electric grid monitoring and control technology to help reduce the duration of storm-related outages to all village residents when they do occur.

### How will this project impact me?

#### Easements

- To reduce the impact to private properties, MGE will coordinate with the Village to use road right-of-way as much as possible to access the lines and equipment being





upgraded.

- Because many of the overhead lines are located along the rear lot lines of private homes, we will be requesting easements from some property owners. MGE will contact those property owners individually.

### Planned Outages

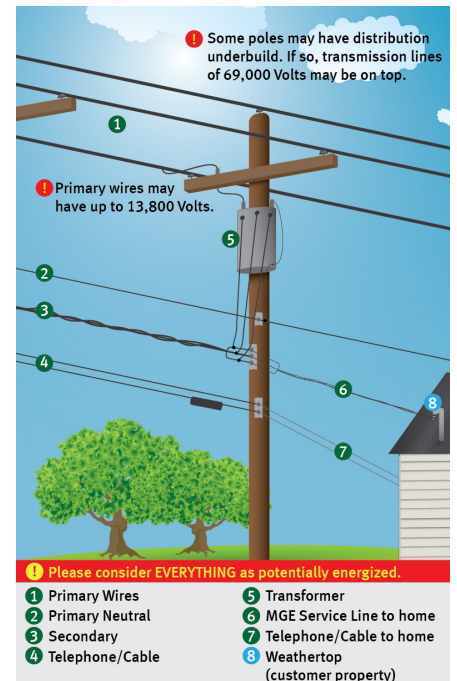
- Electric service outages will occur throughout the project, but they are expected to be minimal.
- We will communicate planned outages in advance.

### Tree Pruning

- Not all properties will require tree pruning, but it may be required in some areas to create safe clearances for the new wires and equipment.
- An ISA Certified Arborist from MGE will contact property owners before any pruning work is performed.
- As a National Arbor Day Tree Line USA Utility, MGE appreciates our community's urban forests. This project will enhance service reliability and reduce the need for future tree trimming in the Village. Visit [mge.com/pruning](https://mge.com/pruning) to learn about MGE's tree pruning process.

### Overhead Service Lines

- This project does not include the conversion of overhead electric wires to individual meters on customers' homes.
- If you're interested in burying your electric service lines to your home, this might be an opportunity to save on costs and minimize disturbance on your property. Please visit [mge.com/bury](https://mge.com/bury) to learn about the process and estimated costs, and how to contact us for a quote.



Visit [mge.com/electricupgrade](https://mge.com/electricupgrade) to learn more.







# JOIN MAPLE BLUFF BOY SCOUT TROOP 5

- Must be at least 11 years old  
(or have finished 5th grade)
- Weekly meetings in the fall & spring  
on Sundays from 7-8pm at Troop 5's  
historic cabin at Firemen's Park
- 4-5 annual outings (submarine  
sleepover, rock climbing, canoeing,  
fishing, hiking, museums, etc.)
- 2-3 annual campouts
- Volunteer outings
- No fee to join! Application here:  
<https://mapleblufftroop5.com>

Scouting is a cooperative activity where boys learn skills that will serve themselves and others well in life. Scouts live by the scout oath, scout law and outdoor code.

Do good, help others and take care of our planet!

## ADULT LEADERS NEEDED TOO!

Questions? Contact Troop 5 scoutmaster, Wes Gill, at [datamanwesley@gmail.com](mailto:datamanwesley@gmail.com)

MADISON'S SMART & SENSIBLE PET CLINIC



# ISTHMUS

VETERINARY + CARE

## NOW OPEN!

**\$10 OFF YOUR  
FIRST VISIT  
WITH THIS AD!**



1730 FORDEM AVENUE  
MADISON, WI 53704  
[ISTHMUSVETCARE.COM](http://ISTHMUSVETCARE.COM)  
608-230-5499



## Parks and Recreation

By: Curt Erickson, Recreation Director/Deputy Treasurer

### *Another season has passed us by in 2023...*

As the calendar turns to the 4th quarter of 2023, the hours of daylight shrink and temperatures plummet, several park amenities will also be removed for the upcoming winter. Over the course of the next few weeks the piers at the marina and beach, nets at Johnson Park, and nets at Beach Park will be removed and stored for the winter. Be sure to get that last swim (if you don't mind water temps in the 50s - 60s), boating excursion, tennis, pickleball, and/or soccer game before it is too late. The changing of the weather also has the Village pivoting to the use of the Village Center gym. Here are a few reminders regarding Open Gym:

1. Access to Open Gym is gained through participation in the Village's key fob program (\$60 annually).
2. Key fob members may bring up to 3 guests per use.
3. Key fob members that wish to bring more than 3 guests must reserve the gym online up to 24 hours in advance.
4. **No food or beverages are allowed inside the gym**
5. Put all equipment away and notify Village staff of any problems or broken equipment.
6. **Hours:** Open Gym time will vary depending on the day of the week, programming, and rentals. The gym will close daily at **9:00pm**. To check on availability, visit the Village's website. If there are no programs or rentals, the gym would be available for Open Play.

### Toddler Open Gym

Weekdays

Time: 8:00a - 11:00a

Fee: Must be members of the key fob program

Toddler Open gym is designated for Village toddlers to burn off some energy inside the gym. Open gym provides age-appropriate toys. All toddlers must always be accompanied by an adult. Program participants must be members of the Village's key fob program. In the event Madison Schools, public or private, Toddler Open Gym will be reduced to 8:00a - 10:00a.



### Treinen Farm Corn Maze & Pumpkin Patch

Saturday 10/21

Time: 11:00a - 2:00p

Fee: \$25.00

**Ages: 0 - 99**

The Treinen Farm has more than amazing mazes and acres of pumpkins. They try to offer all kinds of unique and interesting experiences to engage the senses, mind, and body of adults as well as kids. We invite you to spend a day in the country. Bring a picnic. See what's around the next corner. They believe very strongly in the human need for time in the natural world, so enjoy the relaxed pace and soak up the beautiful fall Wisconsin countryside.

*The program fee does not include transportation.*

Each participant will be allowed to pick 1 pumpkin from the pumpkin patch.

### Music Together: Jingle Jam

Tuesdays, 11/28 -12/12

Time: 9:00am - 9:45am

Time: 10:00am - 10:45am

Dailey Cabin/Firemen's Park

Fee: \$60.00

**Ages: 0 - 5 years old**

Instructor: Susan Cramer

Each Music Together class is an active music making experience designed to teach the way young children learn through play with the ones they love! In this mixed-age class, each child participates at their own level through singing, moving, chanting, listening, watching, and exploring musical instruments. Classes provide a variety of adult-child activities that are engaging and developmentally appropriate and offer new ways to play musically at home.

The featured instrument is Maracas. Families will receive a beautifully illustrated songbook, a CD with the songs, and a code to access music online for each session. Spring morning classes will be held outside when the weather permits.



## Parks and Recreation (continued)

By: Curt Erickson, Recreation Director/Deputy Treasurer

### YEL! Mad Scientists

Wednesday 10/4 - 11/8

Time: 4:30p - 6:00p

Dailey Cabin

Fee: \$134.00

**Ages: 7 - 12**

You'll do some amazing science in each class. Make and take home a lava lamp, hover disc, explosive volcano, and of course slime. Use all these experiments to explore and discover scientific methods. All experiments are physical experiments, not chemical.

### YEL! Coding

Saturdays, 10/7 - 11/11

Time: 9:00a - 10:00a

Dailey Cabin

Fee: \$79.00

**Ages: 5 - 8**

Designed for 21st Century learners. Each YEL! Coding class introduces kiddos to new coding, animation, and video game design concepts like movement blocks, animation, dialogue, timing, and more. YEL! Coding Coaches use Scratch (R) Jr. to guide kiddos through our lessons and create their own animated stories and video games.

Scratch (R) is an MIT created and monitored, kid-safe web interface. It uses a drag and drop programming interface to teach students of all levels coding practices.

### YEL! Coding

Saturdays, 10/7 - 11/11

Time: 10:00a - 11:10a

Dailey Cabin

Fee: \$79.00

**Ages: 7 - 12**

Bring your stories to life with ScratchJr(R) Coding! Students learn the art of storytelling, create simple animations using code blocks, and are introduced to the world of coding all at the same time.

ScratchJR(R) is not affiliated with (YEL!) nor does it endorse this program.

### Babysitter Certification

Saturday, 12/2

Village Center 2nd Floor Training Room

Fee: \$110.00

**Ages: 9 - 15**

Become a capable, confident babysitter that families want to hire. By enrolling in the babysitting class, you'll learn from experts on how to provide care to the kids in the neighborhood. From choosing age-appropriate activities, to keeping kids safe, handling a range of behaviors to building your babysitting business, this course can help you become an in-demand sitter who can handle virtually any situation.

This Red Cross class will not certify participants in CPR but will provide basic CPR and first aid training.

### PreK & K Soccer

Tuesdays 10/17 - 11/14

Time: 4:45p - 5:45p

Village Center Gym

Fee: \$65.00

**Ages: 4 - 6**

Get outside and get kickin' with our fast-paced, inclusive Junior Soccer course! YEL! teaches players new skills each class, practices those skills in kid-friendly games, and then encourages students to use those skills in introductory soccer games. We focus on the fundamentals of dribbling, passing, trapping, and shooting.

### YEL! Junior Basketball

Wednesdays 10/18 - 11/15

Time: 4:45p - 5:45p

Village Center Gym

Fee: \$65.00

**Ages: 5 - 7**

YEL! courses emphasis basic skills development in dribbling, shooting, passing, sportsmanship, and teamwork. This development program will play weekly games at each class.



## Parks and Recreation (continued)

By: Curt Erickson, Recreation Director/Deputy Treasurer

### Traveling Basketball

Practices will begin in November in the Village Gym with games beginning in January. Practice dates and times may change subject to volunteer coach availability. Game locations will be determined later. Area communities involved in the league are Monona, Middleton, Waunakee, Verona, Cottage Grove, McFarland, DeForest and Stoughton. All players will receive a jersey they can keep. Fee of \$90.00 which covers the cost of the jersey and league fees. **Volunteer coaches are needed.**

#### 3rd - 4th Grade

##### Boys

Practice dates are tentatively 11/13 - 2/26  
Mondays 4:45p - 6:00p.

##### Girls

Practice dates are tentatively 11/15 - 2/28  
Wednesdays 5:45p - 7:00p

#### 5th - 6th Grade

##### Boys

Practice dates are tentatively 11/15 - 3/6  
Wednesdays 7:00p - 8:15p

##### Girls

Practice dates are tentatively 11/9 - 3/7  
Thursdays 6:00p - 7:15p

### Open Pickleball

Weekdays

Time: 11:00a - 1:00p  
Village Center Gym

Open Pickleball Play returns in October. The Village has a limited supply of paddles and pickleballs. This is a drop-in program available to Key Fob Program participants at no additional charge. Non-key fob members are required to pay a \$2.00 drop-in fee per attendance. In the event Madison Schools, Public or Private, are off school Pickleball will be canceled for the day.



### 3 v 3 Men's League Basketball

Time: 5:30p - 8:30p

Village Center Gym

Fee: \$90.00

**Age: 18+**

Join your neighborhood friends in a fun 3 on 3 league held in the Maple Bluff gym. The league will consist of games played on Sundays, supervised, and refereed by Recreation staff. League standings will be kept. Please indicate team members during registration.

### Tween Basketball

Join your neighborhood friends in a fun 3 on 3 league held in the Maple Bluff gym. The league will consist of games played on Saturdays, supervised, and refereed by Recreation staff. League standings will be kept. All players will receive a reversible jersey.

#### 3 v 3 Boys (7th - 8th Grade)

Saturdays 11/11 - 2/24

Time: 9:00a - 11:00a

Fee: \$90.00

Ages: 12 - 14

#### 3 v 3 Girls (7th - 8th Grade)

Saturdays 11/11 - 2/24

Time: 12:00p - 2:00p

Fee: \$90.00

Ages: 12 - 14





18 OXFORD PLACE MADISON, WI 53704