



# VILLAGE OF MAPLE BLUFF

neighborhood news

*January 2026*





## Calendar of Events

### January 2026

- 7 Parks & Rec Committee, Noon
- 7 Zoning Board of Review, 5:00pm
- 13 Building Board, 5:15pm
- 13 Village Board Caucus, 7:00pm
- 15 Municipal Court, 5:00pm

### February 2026

- 3 Police Committee, 4:30pm
- 4 Parks & Rec Committee, Noon
- 10 Building Board, 5:15pm
- 10 Village Board, 7:30pm
- 19 Municipal Court, 5:00pm

## Trash/Recycling

JANUARY '26							FEBRUARY '26							MARCH '26						
S	M	T	W	T	F	S	S	M	T	W	T	F	S	S	M	T	W	T	F	S
				1	2	3	1	2	3	4	5	6	7	1	2	3	4	5	6	7
4	5	6	7	8	9	10	8	9	10	11	12	13	14	8	9	10	11	12	13	14
11	12	13	14	15	16	17	15	16	17	18	19	20	21	15	16	17	18	19	20	21
18	19	20	21	22	23	24	22	23	24	25	26	27	28	22	23	24	25	26	27	28
25	26	27	28	29	30	31								29	30	31				

## Village Board

**President** Kevin O'Driscoll

kodriscoll@villageofmaplebluff.com

**Trustee** Jim Schuler

jschuler@villageofmaplebluff.com

**Trustee** Kristine Jaeger

kjaeger@villageofmaplebluff.com

**Trustee** Mike Wittenwyler

mwittenwyler@villageofmaplebluff.com

**Trustee** Greg Engle

gengle@villageofmaplebluff.com

**Trustee** Lillian Bickers

lbickers@villageofmaplebluff.com

**Trustee** Laura Peck

lpeck@villageofmaplebluff.com

Maple Bluff's Scout Troop 5 extends a big thank you to Maple Bluff neighbors for supporting our troop during the recent holiday wreath and garland fundraiser! Your purchases and/or donations allow the troop to do multiple activities including camping, backpacking, fishing and sailing as well as to give back to the community through service projects. Troop 5 has been an important part of the Maple Bluff community for generations. It continues to prepare youth to become responsible citizens and leaders.

If you're interested in learning more about joining the Maple Bluff Scouts (ages 11-18), please reach out to the Troop 5 Scoutmaster, Wes Gill, at [datamanwesley@gmail.com](mailto:datamanwesley@gmail.com).

If you're interested in learning more about joining the newly-formed Maple Bluff Cub Scouts (kindergarten - 5th grade), please contact John Ramkey ([john.ramkey@gmail.com](mailto:john.ramkey@gmail.com)) or Mary Cullen ([marydywercullen@gmail.com](mailto:marydywercullen@gmail.com)).



Wreath/garland delivery day with Troop 5 Scouts and Dads on November 22, 2025

# Village Board President Report

By Kevin O'Driscoll

Happy Holidays!

Thank you to our Village staff for making our community one of the best in Wisconsin. Your hard work, professionalism, and dedication do not go unnoticed, and our community is better because of you.

A quick reminder that the Village Caucus will be held on January 13, 2026. Please plan to attend, and please consider serving the Village by running for Trustee. Local government depends on residents who are willing to step forward and help lead the community.

Thank you as well to everyone who completed the Strategic Plan survey. We will be sharing survey results and communicating our 2026 Strategic Plan initiatives in January. I'm pleased to share that we are on budget, on time, and on task.

Speaking of budgets—PROPERTY TAXES. WOW. Like many of you, my property tax increase was shocking. I want to be very clear: this increase is not due to the Village of Maple Bluff budget, and it is largely outside of our control—except for the portion that comes from the Village itself.

FACT: The Village of Maple Bluff retains \$0.34 of every dollar in property taxes collected. The other 66 cents go to the Madison Metropolitan School District, Madison College, and Dane County.

If you look at the percentage changes on your tax bill, here are the facts:

- Madison Metropolitan School District: 27.1%
- Madison College: 3.2%
- Dane County: 4.2%
- Village of Maple Bluff: 0.5%

The Village of Maple Bluff kept our tax increase nearly flat at 0.5%. Thank you to our Village team for managing expenses so carefully. The increases from the other taxing jurisdictions were significant, and those costs are beyond the Village's control.

What can we do about the portion of our taxes going to the school district, Madison College, and Dane County? Nothing.

What can we control? Our own spending—and we will continue to do so.

Another important fact: approximately 70% of the Village's expenses are payroll. Our Village staff are fantastic, and I know residents support doing right by our team when it comes to compensation. While we will always work to keep expenses as low as possible, payroll is not an area where we look to cut corners. It is an area where we strive to be fair and supportive of the people who serve our community every day.

I am often asked about the last referendum and what the Village Board is doing to control expenses. As evidenced by the Village's 0.5% tax increase, we are doing a lot—and we will continue to do everything possible to manage costs responsibly.

Thank you again to our Village staff for your outstanding work.

Happy Holidays. Enjoy all that our community has to offer, and please take a moment to be thankful for our dedicated Village team.





## Looking Ahead to 2026 *By Tanner A. Nystrom*

As we begin a new year in Maple Bluff, I want to take a moment to look ahead—grounded in the values that have long defined our Village and with a clear sense of purpose for the months to come.

Before turning fully to what lies ahead, I want to acknowledge the professionalism and dedication of our Police Department. I am grateful to Sarah for attending the Police Department's awards dinner on behalf of the Village to recognize our officers' service and accomplishments. The photograph included in this newsletter captures a team that continues to serve our community with care, discipline, and integrity. I am proud of their work and thankful for their commitment to Maple Bluff.

January also brings an important civic milestone. The Village Caucus will take place on Tuesday, January 13, at 7:00 p.m. at the Village Center. The Caucus is a meaningful opportunity for residents to step forward and participate directly in Village governance. Maple Bluff has benefited greatly from residents who bring thoughtfulness, balance, and genuine care for the community into public service, and I encourage anyone who has considered serving—or learning more—to attend.

Over the past several months, the Village has been engaged in the first phase of our 2025-2026 Strategic Planning Process, beginning with broad resident input. I am pleased to share that approximately one-third of our residents participated in the Community Survey, providing thoughtful and constructive feedback. The Village Board reviewed the results prior to the holidays, and several themes stood out clearly.

Residents consistently expressed appreciation for Maple Bluff as a safe, beautiful, and friendly community. Many noted that the vision guiding the Village over the past 20 years continues to resonate today. There is strong support for preserving high-quality, independent Village services, paired with an expectation that Village tax increases remain at or below the rate of inflation whenever possible. And as Madison continues to grow around us, residents emphasized the importance of taking intentional steps to preserve Maple Bluff's unique identity.

These insights will guide the next phases of the Strategic Plan as we move into 2026, including deeper analysis of long-term service needs, financial sustainability, and community priorities. I want to thank everyone who took

the time to participate—your input is shaping the Village's path forward in a meaningful way.

I also want to provide an update on the live-feed camera trial. The planned 60-day trial was delayed due to technical issues encountered during installation. We are working with Flock to extend the trial period so we have sufficient time to evaluate the technology as intended. As a result, discussions at the Police Committee and Parks & Recreation Committee will now likely occur in late January or early February. I appreciate the many residents who have shared their perspectives—both supportive and opposed. Hearing a range of views is important as we evaluate tools that touch on public safety, privacy, and community expectations.

Across all departments, staff are entering 2026 with optimism and gratitude. Administration is advancing strategic planning work and financial coordination. Public Works continues preparing for winter conditions and maintaining the high standards residents expect. Fire and EMS remain ready to respond, and our Police Department continues to serve around the clock with professionalism and care. We are fortunate to work in a community that is engaged, supportive, and thoughtful.



As we begin the new year, thank you for the trust you place in Village staff and elected officials. Maple Bluff's strength lies not only in its services and infrastructure, but in the shared commitment of residents to the community we call home. I look forward to working together in the year ahead.

Sincerely, Tanner A. Nystrom





## Maple Bluff Fire Rescue

*By Jeff Drager, Assistant Fire Chief*

### Response Information

Total Responses year to date: 155 as of December 18th, 2025. In November our average response time for emergency incidents in the village was 2 minutes and 52 seconds. This time span is from the initial alarm to the first unit arriving on scene to both fire and EMS incidents.

### Personnel

Our department also took on an additional paid-on-call member in November. Cameron comes to our department with previous experience with his hometown in Connecticut. He comes to us already certified as a firefighter and EMT. Cameron has been assigned to a shift and is serving the residents of Maple Bluff.

### Training

Our personnel have been busy training on our new engine that arrived in November. This training has included pumping operations, engine operations, and emergency driving. All personnel are required to not only complete certification training to drive the apparatus, but they must also complete in-house training that prepares them to safely operate the apparatus.

Over the past few weeks, our personnel have also been busy training on ice rescue operations. You will see our personnel in the village at various water locations over the next couple of weeks. This training includes rescuing a patient from the water and treating patients suffering from hypothermia.

### Public Outreach

On November 30th, our personnel escorted Santa around the village for the annual tree lighting. We want to thank the many residents that came to visit with Santa, enjoy the tree lighting, and participate in singing a Christmas carol at the park. We will see you again next year, Santa!







## Department of Public Works

*By Tom Schroeder*

Happy New Year to all!!! I hope your holiday season was full of family and friends with lasting memories. As for myself? I can attest that 2025 turned out to be the best of the best of years. Insert smile here. I'm of a mind and body that this year will be even better than the last. Insert smile and wink here.

As for the season? It looks like winter has found us and will likely stay for an extended period. Make the best of it and get out of doors to enjoy what our southern neighbors don't understand.

A recent snowfall started in the evening on the 9th of December and finished the next morning. The 10th was trash collection day. There were trash and recycling carts out the evening of the 9th and through out the day of the 10th. We could not plow curb to curb with so many carts in the street. We could have cleared the roadways the next day...but there would have been a lot of long faces. Next plowing engagement we will reclaim the road surface edge to edge. Please help us provide the plow services

that we do with pride by placing the cart on the drive apron or remove some snow at the terrace for the cart to sit off and away from the road surface, thank you.

A thank you to the residents that not only place their trash/recycle containers off the street; they also clear snow away from the Hydrants as well. We all appreciated it.

We still need to hear from residents that they have not had the new water meter end point installed in their home. Please follow the links on the village web site. Thank You.

We will collect Christmas trees in the month of January. Please remove all ornaments and decorations as well as the stand too!!

Try to find joy in every day, that may be a challenge to complete. If so, try bringing some joy into the day. I'm working on getting better at both ends. Have a great year!



## What Should We Do With N. Sherman Ave.?

In 2027, Maple Bluff will be improving our stretch of N. Sherman Avenue—from Commercial Avenue up to Oxford Place. At a minimum, we can just repave the road. But this also gives us a chance to think bigger: Are there features we should add to make it safer for drivers, pedestrians and cyclists? Improve traffic flow? Make it easier to maintain? Transform the streetscape into a more attractive gateway into our Village?

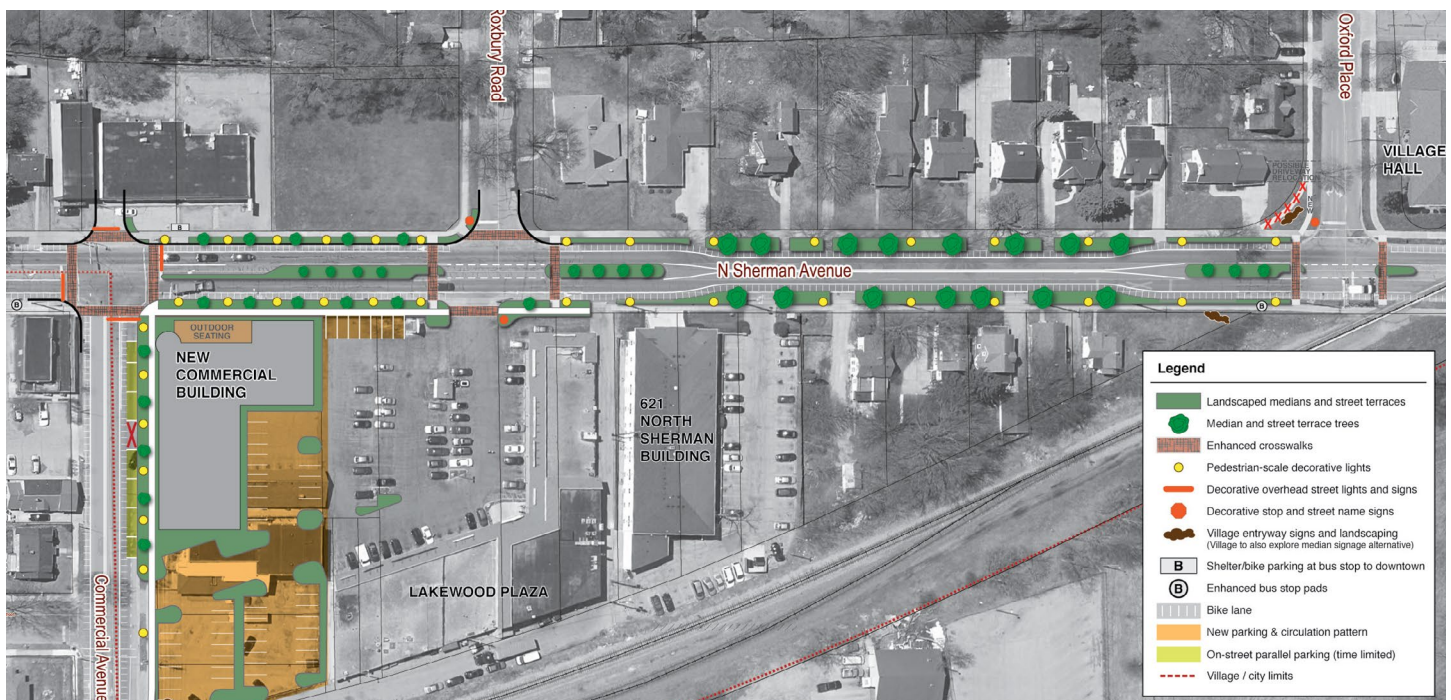
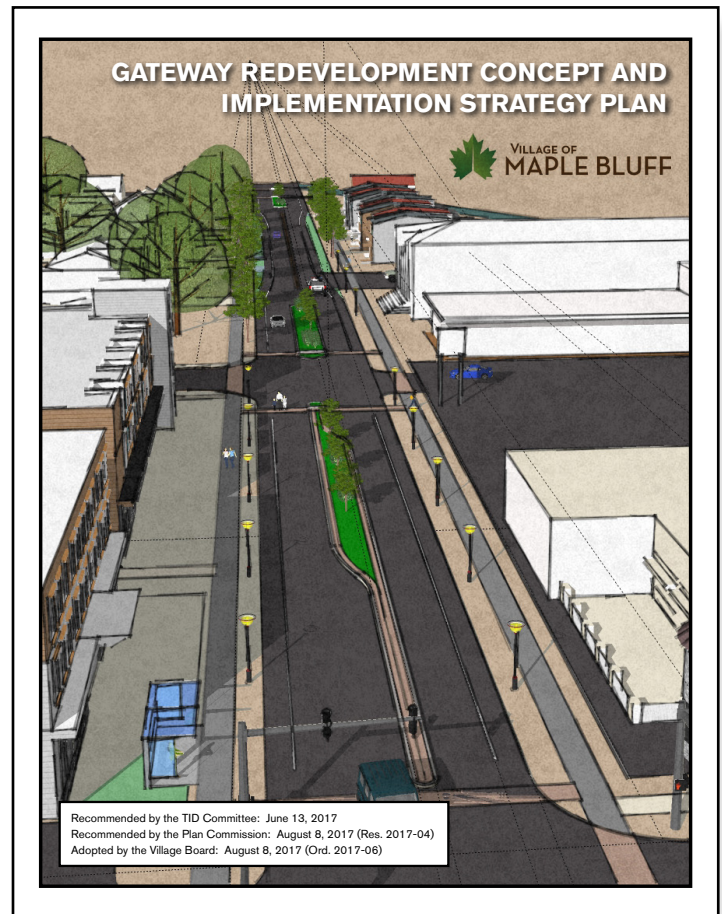
The 2017 [Gateway Plan](#) (pages 14-20) includes some ideas, but a lot has changed since then—traffic patterns, Village priorities, and maybe even how residents use the road. So before we make any decisions, we want to hear from you.

Early in 2026, the Public Works Committee will host a **Town Hall meeting** to kick off the discussion. We'll review the concept approved in 2017, and present new information on traffic patterns, engineering and streetscape best practices, city of Madison plans for the rest of the N. Sherman—and then open the floor for your questions and ideas.

We'll announce the Town Hall date in upcoming Village emails. If you don't already receive them, you can sign up [here](#).

Until then, please take a look at the Gateway Plan, and start thinking about what you'd like N. Sherman Avenue to look like in the future. This is your chance to help shape the entryway to our community.

Jim Schuler  
Chair, Public Works Committee



## Parks & Recreation

By: Mark Benishek, Director of Municipal Services & Recreation

As we look back on an incredible 2025, our Parks & Recreation Department is filled with gratitude for a year brimming with memorable events, vibrant programs, and community spirit. From lively summer concerts and family festivals to enriching youth programs. This year reminded us of the power of coming together. None of it would have been possible without our dedicated volunteers and hardworking Village staff, whose passion and commitment bring our community to life. Thank you for making 2025 a year to remember—we look forward to creating even more unforgettable moments in the year ahead!



**2026 Maple Bluff Event Volunteer Coordinators**

To keep the beloved Village events alive and build on these wonderful traditions, it is essential to have the support and involvement of our Village Residents. We are so grateful to the people who have donated their time, money, and enthusiasm to these events! We need fresh energy and continued participation to keep these fun things going! Please consider volunteering for an event during 2026.

Sign up to volunteer here: <https://www.signupgenius.com/go/9040B4BADAE2DAB9-58506995-2026#/>

### 2026 Event Calendar

- January 30: Euchre Tournament
- June 5: Bocce Bash
- June 7: Graduate Party
- June 22 – Aug 3: Concerts in the Park (Mondays)
- June 21: Father's Day Parade
- July 4: Fest on the Fourth
- October 25: Halloween Parade
- November 29: Holiday Parade & Tree Lighting

## Time to Renew Your 2026 Key Fob & Pet License

Keep your household up to date for the new year. If you need to purchase or renew your Key Fob membership or Pet License, please visit the links below or stop by the Village Center front desk during office business hours.

2026 renewals or first-time purchases are now open for both the **Key Fob Program** and **Pet Licenses**.

Purchase/Renew Your Key Fob – <https://maplebluff.recdesk.com/Community/Membership/Detail?membershipId=166>

Deadline: February 27, 2026

Renew Your Pet License – [2026-Pet-License-Application-Fillable-PDF.pdf](#)

If you have any questions, please contact the Village Office at: 608-244-3048.



## Key Fob Program

The Village Key Fob Program provides access to the Village Center Gym, Beach House, and Dailey Cabin. The program allows access to the Village Gym for Toddler Playtime, Pickleball Open Gym, and regular Open Gym time, and access to each facility's restrooms. Please check the facility calendar found on the Village's website to verify availability. If you have misplaced your fob, please notify the Village Center as soon as possible so that it can be deactivated to safeguard our facilities.



## Open Gym

### Here are a few reminders about Open Gym:

1. Access to Open Gym time is gained through participation in the Village's Key Fob Program.
2. Key fob members may bring up to 3 guests per use.
3. Key fob members that wish to bring more than 3 guests must reserve the gym online up to 48 hours in advance.
4. **No food or beverages are allowed inside the gym**
5. Put all equipment away and notify Village staff of any problems or broken equipment.
6. Hours: Open Gym time will vary depending on the day of the week, programming, and rentals. The gym will close daily at 9:00pm. To check on availability, visit the Village's website. If there are no programs or rentals, the gym is available for Open Play.



## 2026 Euchre Tournament

### Friday, January 30th

#### Save the date!

The Maple Bluff Euchre Tournament returns for another year. Shake off the couch cushions and brave the cold, and dark evening as you make your way to Beach Park for some good old-fashioned camaraderie and friendly competition with your neighbors.

**6:30 PM** – Bar opens, and registration begins. Cost is \$20 per player, which covers your buy-in, pizza, and one premium beer or glass of wine. Add just \$15 more for unlimited beer or wine—now that's a deal! Cash, check, or Venmo accepted at the door.

**7:30 PM** – Quick rundown of the rules. New to euchre? Don't let that stop you—beginner's luck is real!

**8:00 PM** – Euchre play begins. You'll be paired randomly with a new neighbor each round. Don't stress—it's part of the fun!

**10:00 PM** – Time to show off your moves... on the dance floor.

Visit the link below to register for the 2026 Euchre Tournament: <https://maplebluff.recdesk.com/Community/Program/Detail?programId=156>

**\*ALL PAYMENTS FOR REGISTRATION AND BEVERAGES WILL BE TAKEN THE DAY OF THE EVENT.** Payment can be made using cash, check, or Venmo.

We're also looking for a few good people to help with this event. Think you've got what it takes to get people registered or keep them hydrated throughout the night? Sign up to volunteer here: <https://www.signupgenius.com/go/9040B4BADAE2DAB9-58506995-2026#/>

## Toddler Open Gym

**Time:** 8:00am – 11:00am, Weekdays

**Location:** Village Center Gym

**Fee:** Must be members of the key fob program

Toddler Open Gym is designated for Village toddlers to burn off some energy inside the gym. Open gym provides age-appropriate toys. All toddlers must always be accompanied by an adult. Program participants must be members of the Village's key fob program. In the event Madison Schools, Public or Private, are closed, Toddler Open Gym will be reduced to 8:00am – 10:00am.

## Pickleball Open Gym

**Time:** 11:00am – 1:00pm, Weekdays

**Location:** Village Center Gym

**Fee:** Must be members of the key fob program

Open Pickleball Play returns in November. The Village has a limited supply of paddles and pickleballs. This is a drop-in program available to Key Fob Program participants at no additional charge. Non-key fob members are required to pay a drop-in fee. In the event that Madison Schools, Public or Private, are closed, Pickleball will be canceled for the day.



## Youth Programs

### Enrichment

#### **Bricktopia - Racers**

**Dates & Time:** Monday, 2/2 - 3/9, 4:15 - 5:15

**Fee:** \$81.00

**Grades:** 1st - 5th

**Location:** Beach House

Join Bricktopia Racers to build Formula 1 racers, land yachts, and more with LEGO® bricks. Explore engineering and problem-solving in an innovative and adventurous way. Start creating with Bricktopia today! LEGO® is a trademark of the LEGO Group of companies which does not sponsor, authorize or endorse this site or program.

#### **Bricktopia - Tall Towers**

**Dates & Time:** Monday, 4/6 - 5/11, 4:15 - 5:15

**Fee:** \$87.00

**Grades:** 1st - 5th

**Location:** Beach House

Can your tower withstand heavy winds or an earthquake? Can your bridge withstand a convoy of trucks filled to the brim? The YEL! Bricktopia Tall Towers class challenges innovators to explore these engineering questions and principles while building their own towers, their own bridges, and more, using LEGO® bricks. Get busy building better bridges today! LEGO® is a trademark of the LEGO Group of companies which does not sponsor, authorize or endorse this site or program.

#### **Music Together**

**Dates & Time:** 1/6 - 3/10, 9am, 10am, or 4pm

**Fee:** \$165

**Ages:** 4 - 7 yrs.

**Location:** Dailey Cabin

Each Music Together Mixed-Age class is an active music making experience designed to teach the way young children learn - through play with the ones they love! Each child participates at his or her own level through singing, moving, chanting, listening, watching, and exploring musical instruments. Classes provide a variety of adult-child activities that are engaging and developmentally appropriate and offer new ways to play musically at home. This semester includes a beautifully illustrated songbook, a code to download the music collection, and access to Music Together's Family Music Zone. All classes are held in the Dailey Cabin. More information can be found at [Musictogetherwithsusan.com](http://Musictogetherwithsusan.com).

#### **Music Together-Rhythm Kids**

**Dates & Time:** 1/6 - 3/10, Tuesdays, 5pm

**Fee:** \$165

**Ages:** 4 - 7 yrs.

**Location:** Dailey Cabin

Music Together Rhythm Kids (ages four to seven) Students learn to create, choreograph, and conduct as they play - and play with! - a variety of musical instruments: West African djembe drums, percussion

instruments, and the most important instruments of all, their voices and their bodies. As your big kid learns to think and create like a musician, they'll also build musical connections to the global community. Please take a look at [musictogetherwithsusan.com](http://musictogetherwithsusan.com) for more information. Adult participation in class is encouraged but not required.

#### **Video Game Design - Force Warriors**

**Dates & Time:** Friday, 1/30 - 3/6, 4:15 - 5:15pm

**Fee:** \$90.00

**Grades:** K-2nd

**Location:** Village Center Conference Room

The legend of the Force Warriors lives on...through you! Students design their own Knights of the Rebellion, chart a course across the galaxy, and create their own epic duel with the infamous Dark Knight. Students leave class with their own video game creations.

#### **Robotics: Muscle 'Bots**

**Dates & Time:** Wednesday, 1/28 - 3/4, 5:00 - 6:00pm

**Fee:** \$93.00

**Grades:** 1st-5th

**Location:** Village Center Conference room

Get ready to flex some robot muscle! We'll build a robot to compete in a tug-o-war competition, a truck pull, and haul heavy loads. Students use these robots to learn basic computer coding and engineering principles.

### Sports

#### **Junior Basketball**

**Dates & Time:** Wednesday, 12/3-1/21, 4-4:45pm or 6- 7pm  
OR Tuesdays, 1/27-3/3, OR 3/17-4/28, 4:15-5:15pm

**Fee:** \$81.00

**Location:** VH Gym

**Grades:** K-3rd

Join this fast-paced, inclusive (everyone plays) class. YEL's Teach It, Practice It, Play It® approach teaches players new skills each class, practices those skills in kid-friendly games, and then encourages students to use those skills in introductory basketball games. Emphasis is placed on basic skills development of dribbling, shooting, passing, sportsmanship, and teamwork. Sign up soon...the shot-clock is running down!

#### **Track & Field Decathlon**

**Dates & Time:** Thursday, 4/16 - 5/21, 4:15 - 5:15pm

**Fee:** \$87.00

**Location:** VH Gym

**Grades:** 1st - 4th

Fast-paced and inclusive (everyone participates). YEL's Teach It, Practice It, Play It® approach teaches players new skills each class practices those skills and then use them in safe track and field events (javelin, discus, shot put, long jump, relay race and more). SAFETY is our first rule. We use foam padded javelins and safety hurdles, as well as lightweight safety shot put and discus materials. Get set...GO! Sign up today!





## Adult Programs

### NEW - GYROKINESIS

**Time:** 9:30-10:30am

**Dates:** Thursdays

Session 1: January 8-March 12

Session 2: March 19 - May 21

**Fee:** \$90 per session

**Location:** Dailey Cabin

**About the class:** Gyrokinesis classes focus on whole-body movements for functional use and breathwork to address the whole human system and restore balance. By taking this class, individuals will learn how to decompress all their joints while performing the exercises so that the body can expand and increase the range of motion in a safe and healthy manner. Gyrokinesis is performed on chairs, mats, or standing. Gyrokinesis is designed for any age or ability and allows each student to move within their comfort range.

#### Gyrokinesis benefits:

- Stimulates the nervous system
- Increased range of motion
- Improved functional strength & flexibility
- Improved spinal & joint health
- Improved balance & posture

**About the Instructor:** Lillian Wilner was a professional ballet dancer who worked as a principal dancer with the Alberta Ballet Company for most of her dancing career. Upon moving to Wisconsin, Lillian opened the WI Academy of Ballet, sharing her love of dance with all ages. She currently teaches ballet once a week at the Madison Ballet Company. After becoming a certified Gyrotonic Expansion System Instructor in 2012, Lillian opened Spiralz, a one-of-a-kind studio in Madison that offers personal training and Gyrokinesis and Gyrotonic exercise classes. For more information on Gyrokinesis and Lillian, go to the Spiralz website: [www.spiralz.biz](http://www.spiralz.biz)



## 2026 VOLUNTEER EVENT COORDINATORS NEEDED

The Village is looking for a few more volunteers to help coordinate our 2026 community events, which include Grad Party, Father's Day Parade, Fest on the 4th, Bocce Event /Tournament, and the Halloween Parade.

Volunteers play a key role in planning, organizing, and bringing these favorite Village traditions to life. It's a great way to get involved and make a lasting impact in the community!

Sign up on the Village Parks & Recreation Special Event Webpage.

## VILLAGE CENTER GYM LIGHTING UPGRADE - TEMPORARY GYM CLOSURE

The Village Center will be completing a lighting replacement project on **January 5 & 6**. During this time, the **gym will be closed**.

This project includes replacing the gym lighting with energy-efficient LED fixtures, improving lighting quality, and long-term energy savings.

Thank you for your patience and understanding as we complete this maintenance project.







# SPRINKMAN DESIGN COLLECTIVE

MADISON

## REIMAGINE YOUR HOME, IN THE NEW YEAR

Home. It's the place where you spend time with loved ones, reset from your days and rest your head. It should be a comfortable and beautiful reflection of who you are. That's where we come in. We are your dedicated, full-service design experts, attentively listening to your wishes and transforming them into designs that both impress and inspire. From new construction and renovations to furniture, fixtures, and finishes — we are here to make your space your own.



SCAN THE QR CODE OR VISIT [SPRINKMANDESIGN.COM](https://sprinkmandesign.com)